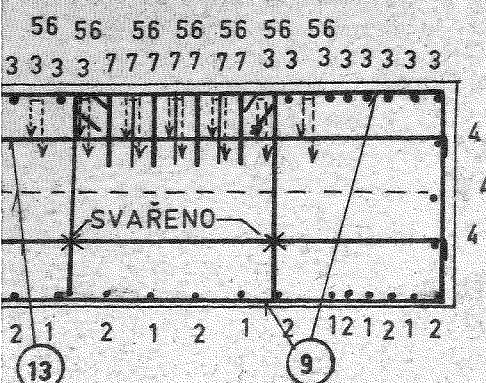
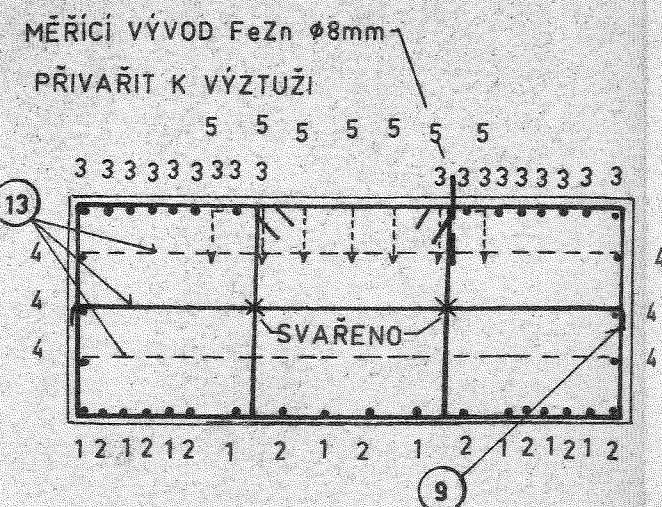


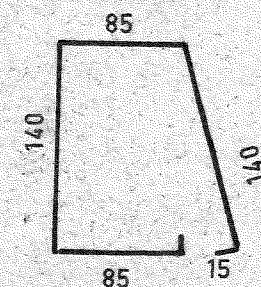
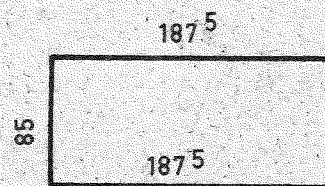
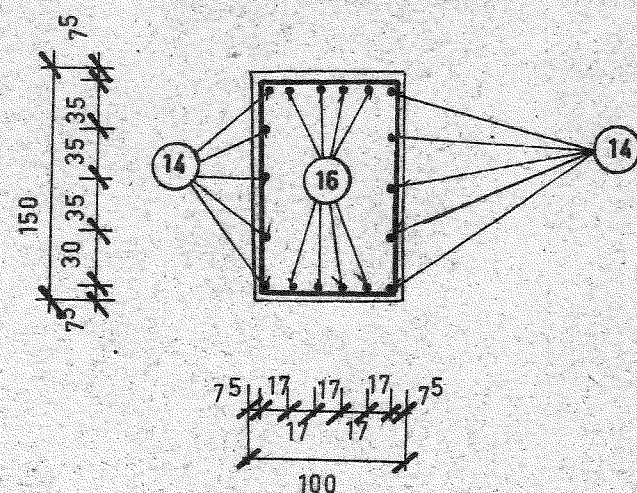
B-B' 1:50



ŘEZ C-C' 1:50



ŘEZ D-D' 1:50



14 ØV16 DL.470 ks-10

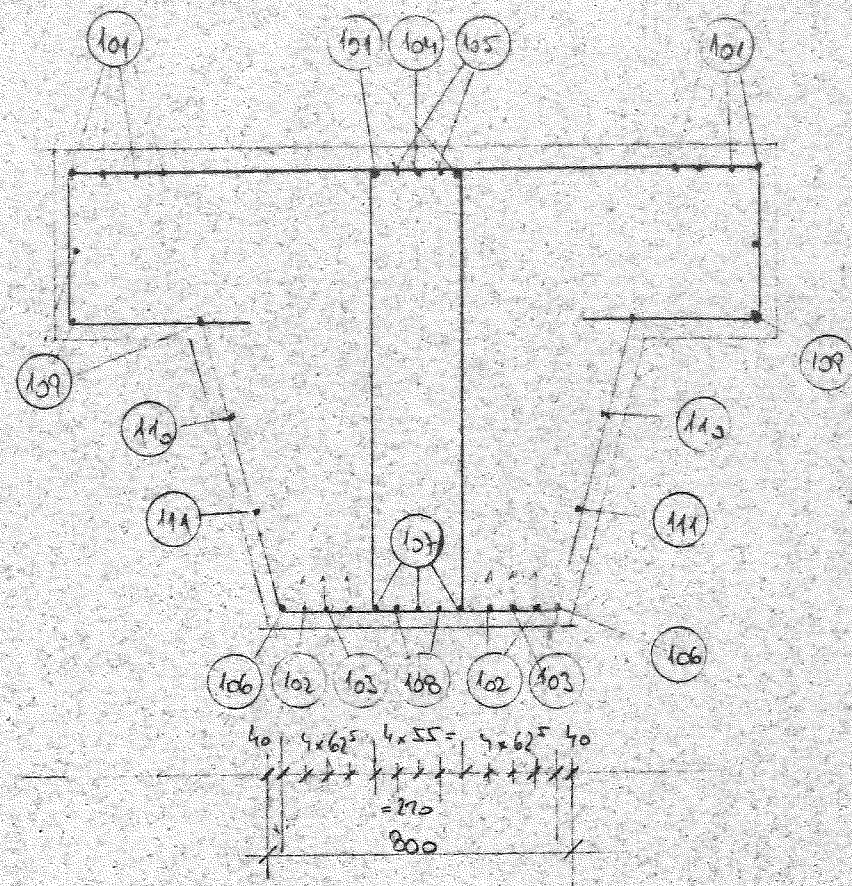
15 ØV16 DL.480 ks-12

16 ØV16 DL.190 ks-8

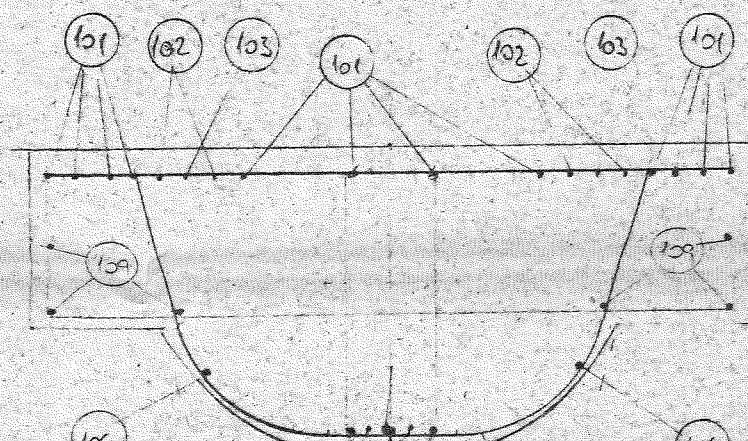
TABULKA VÝZTUŽE

OZN.	ØV /mm/	ks	DĚLKA 1ks /m/	DĚLKA DLE Ø /m/	
				ØV16	ØV25
1	25	9	16.30		146.70
2	25	9	16.30		146.70
3	25	18	15.30		279.40
4	16	6	15.30	91.80	
5	25	14	6.50		91.00
6	25	7	6.50		45.50
7	25	14	4.50		63.00
8	25	18	5.80		104.40
9	16	96	8.00	768.00	
10	16	48	5.65	271.20	
11	16	66	6.00	402.60	
12	25	45	2.50		112.50
13	16	98	3.90	332.20	
14	16	10	4.70	47.00	
15	16	12	4.80	57.60	
16	16	8	1.90	15.20	
DĚLKA DLE Ø CELKEM /kg/				2035.60	983.40
HMOTNOST 1bm VÝZTUŽE /kg/				1.578	3.853
HMOTNOST DLE Ø CELKEM /kg/				3212.18	3791.99
HMOTNOST VÝZTUŽE CELKEM: 7004.17kg					

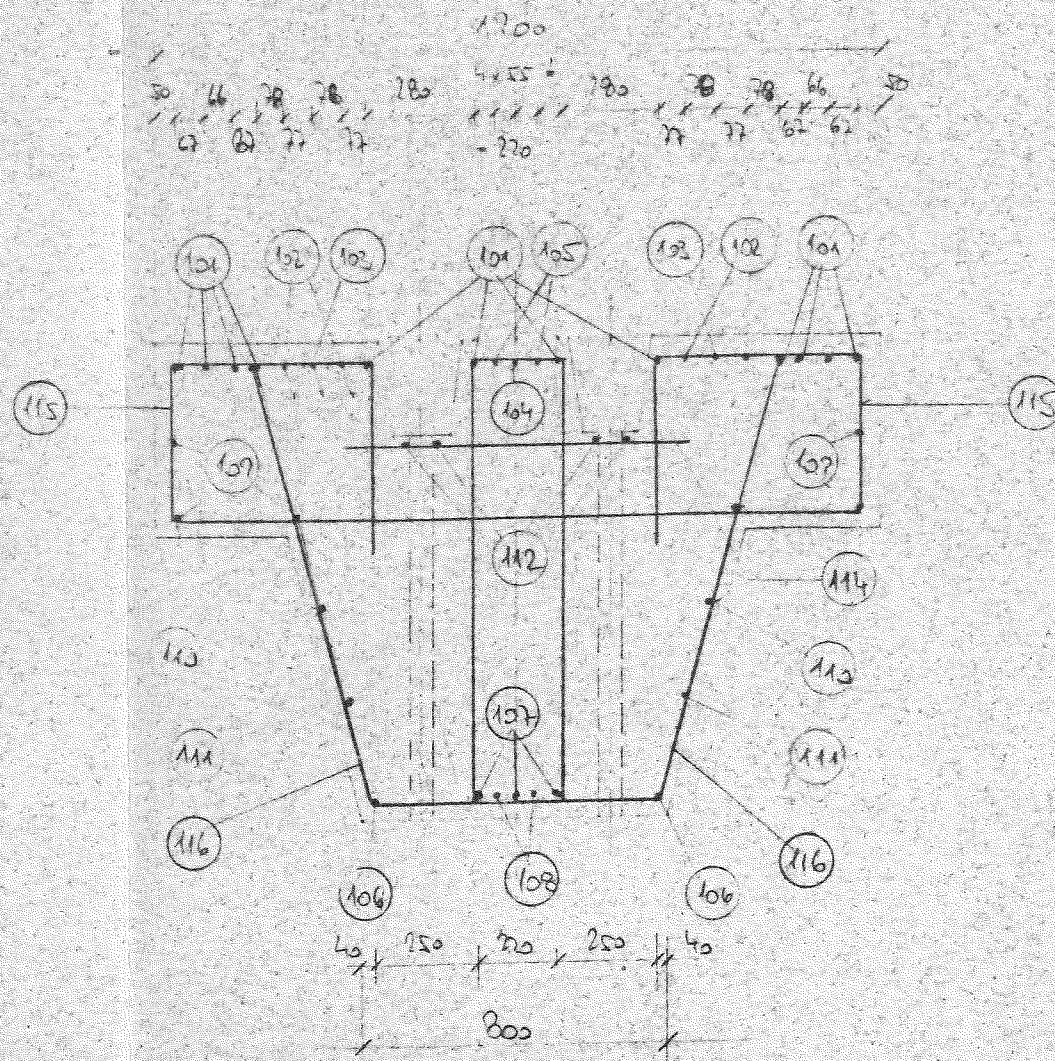
REF A-A



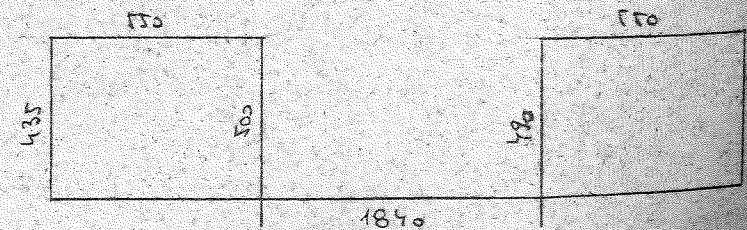
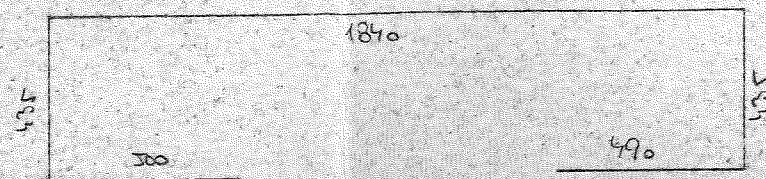
REF C-C



REF B-B



117 $\Phi V 14$ DL 3200 $2 \times 276s = 586s$



115 $\Phi V 14$ DL 4800 $2 \times 106s = 212s$

